



SURPHASER® — 3D LASER SCANNERS

Known for its unsurpassed accuracy and scan quality, the Surphaser line of scanners offers both short range and medium range models ideal for use in reverse engineering, dimensional control, historical preservation, architecture, and forensics.

SURPHASER 25HSX – HEMISPHERICAL 3D SCANNER ADVANTAGES:

- Submillimeter system with scan rate of up to 1 million points per second
- Designed to operate in industrial and outdoors environments
- Software allows export of clean and accurate data sets into PolyWorks®, Geomagic®, Cyclone®, RealWorks®, RapidForm® and other applications for processing
- Portable and easy to move around - fits into carrying case approved for cabin luggage for most domestic airlines

FOR 3D SCANNER DEVELOPERS AND MANUFACTURERS:

OEM products based on advanced Surphaser technology-range unit and software. Software options include everything for rapid development of customized 3D laser scanner system best suited for particular application.

SURPHASER® 25HSX CONFIGURATION OPTIONS

Configuration	SR	IR_X	MR_X	ER_X
Ambiguity Range, m	46	46	46	46
Recommended Work Range, m	0.2-5	0.4-19	1-30	1-46
Range Noise, 1 sigma, mm	0.07	0.12	0.25	0.35
Range Uncertainty, mm	< 0.3@3m	< 0.5@5m	< 0.7@15m	< 1@15m



HYUNDAI ELANTRA TOURING: TV COMMERCIAL



Exterior - 12 scans - 70 millions points

Scan time - 2 hours

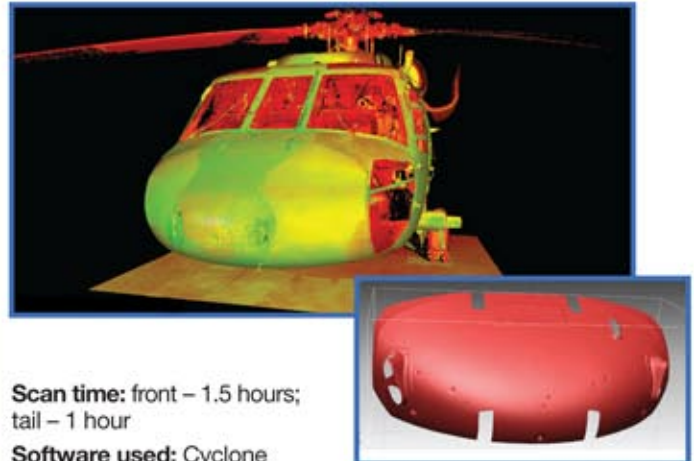
Polyworks **processing time** for alignment and polygon model creation: 4 hours

Interior - 15 scans - 90 million points

Scan time - 4 hours

Polyworks **processing time** for alignment and polygon model creation: 6 hours

BLACK HAWK: CUSTOM DEVICE ATTACHMENT



Scan time: front – 1.5 hours; tail – 1 hour

Software used: Cyclone for cleaning and registration, RapidForm for modeling

Processing time: 10 hours from point cloud to 3D surface models

Total time: 30 hours from start of the project to flight with a new object attached



EMS, Inc
10006 Cross Creek Blvd, Ste 410
Tampa, FL 33647
877-845-2700